

# dyson airblade 9kJ

## Technical specification

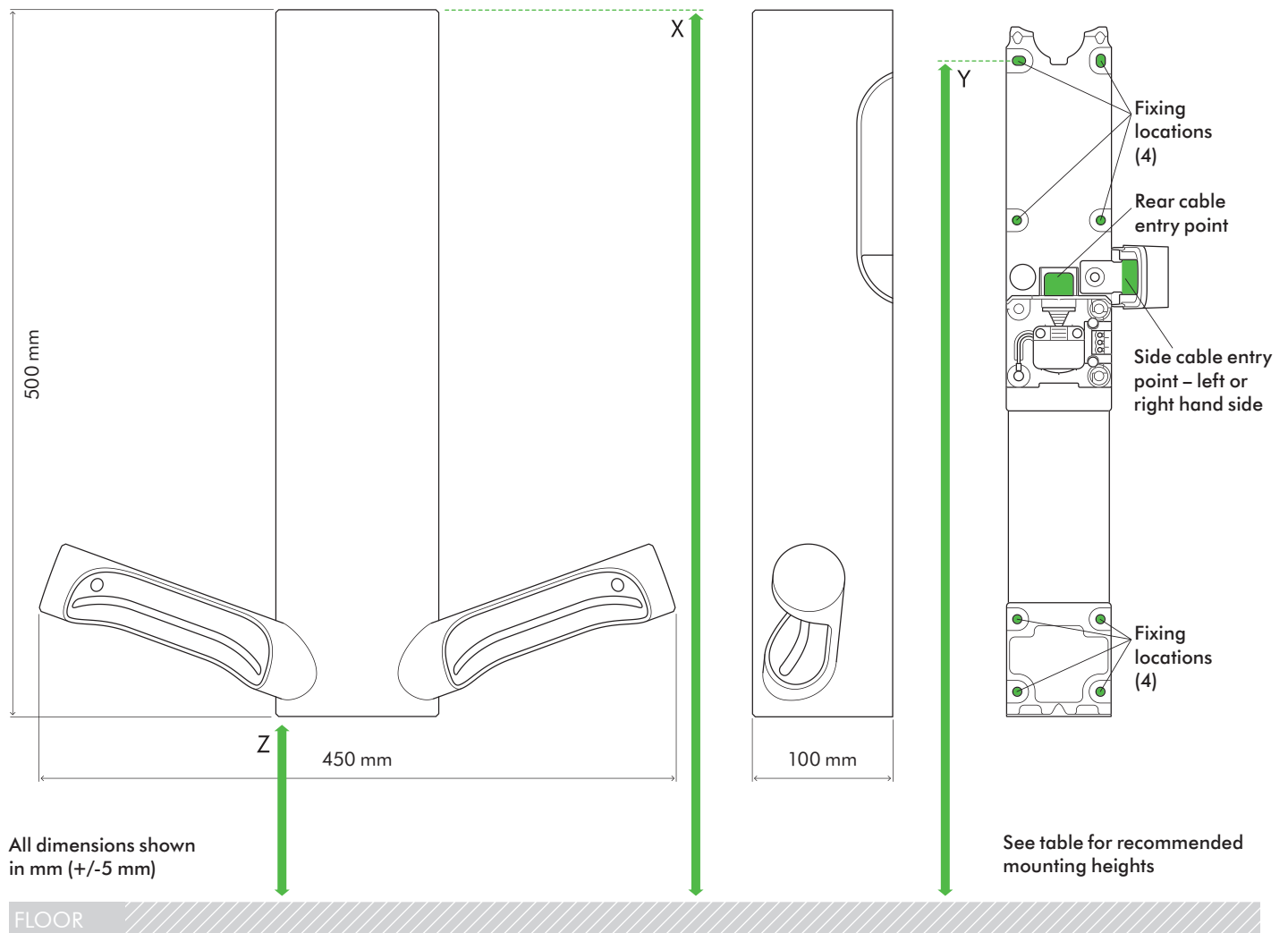


HU  
03

Front elevation

Side elevation

Back plate



Recommended installation heights from floor			
Male	X 1489 mm	Y 1451 mm	Z 989 mm
Female	X 1454 mm	Y 1416 mm	Z 954 mm
Wheelchair user	X 1400 mm	Y 1362 mm	Z 900 mm
Child 5-8	X 1117 mm	Y 1079 mm	Z 617 mm
Child 8-11	X 1217 mm	Y 1179 mm	Z 717 mm
Child 11-14	X 1294 mm	Y 1256 mm	Z 794 mm
Machine dimensions			
Height 500 mm Width 450 mm Depth 100 mm			

Minimum clearance	
210 mm above machine	
Rear cable entry point from floor	
Male	1293 mm
Female	1258 mm
Wheelchair user	12 mm
Child 5-8	921 mm
Child 8-11	1021 mm
Child 11-14	1098 mm

For further information please contact Dyson:

AU: 1300 652 715  
[info@ozwashroom.com.au](mailto:info@ozwashroom.com.au)  
[www.ozwashroom.com.au](http://www.ozwashroom.com.au)

# dyson airblade 9kJ

HU  
O3

## Electrical

Input voltage/Frequency: 220-253 V 50-60 Hz

Standby power consumption: Less than 0.5 W

Motor specification: 900 W (MAX) mode / 650 W (ECO) mode  
digital brushless motor

Heater type: None

## Construction

Fascia: Stainless steel – Brushed (304L)

Backplate mounting bracket: Stainless steel

Exterior screw type: Anti-tamper 5 mm torx plus

Water ingress protection to IP24

## Filter

HEPA filter (Glass fibre and fleece prelayer)

Captures 99.95% of particles<sup>1</sup>, including bacteria and viruses

## Operation

Touch free time of flight sensor activation

Hand dry time measurement: 10 seconds (MAX) mode / 12 seconds (ECO) mode  
(measurement based on NSF Protocol P.335)

Sound power level: 79 dB(A) (MAX) mode / 76 dB(A) (ECO) mode

Operation lock-out period: 30 seconds

Airspeed at aperture: 602 km/h / 374 mph

Maximum altitude: 3,000 metres / 9,842 ft

## Logistics

Net weight: 4.5 kg / 9.9 lbs

Packaged weight: 7.6 kg / 16.8 lbs

Packaged dimensions:

(H) 129 x (W) 520 x (D) 616 mm / (H) 5.1" x (W) 20.5" x (D) 24.3"

## Standard guarantee

5 year parts (self-service)



## Dyson backplate

Where only unsupported plasterboard is available for installation, a Dyson backplate must be used. The Dyson backplate helps protect the wall from water damage and can be used to cover holes/marks left from previously installed products – including the Dyson Airblade dB hand dryer. Contact the Dyson Helpline or [www.dyson.com.au](http://www.dyson.com.au) or [www.dyson.co.nz](http://www.dyson.co.nz) for further information

## WELL Building Standard™

Dyson Airblade™ hand dryers contribute towards satisfying Feature W08 under the WELL Building Standard™.



For further information please contact Dyson

AU: 1300 652 715

[info@ozwashroom.com.au](mailto:info@ozwashroom.com.au)

[www.ozwashroom.com.au](http://www.ozwashroom.com.au)

The Carbon label is a trademark of the Carbon Trust.  
International WELL Building Institute™ and the related logo are trademarks  
used with permission from the International WELL Building Institute™.

<sup>1</sup>HEPA filter tested to EN1822-5, by an independent testing laboratory, under prescribed test conditions.